

Smooth Line

HIGH PERFORMANCE COMPOSITES

2562 Ridle Run Road Tarentum, Pa 15084

www.smoothline.com

HIGHEST QUALITY WORLD WIDE

◆ Sports Car Hardtops

◆ Sports Car Body Panels

Phone: 724-274-6002

Fax: 727-274-6121

INSTALLATION INSTRUCTIONS

Pontiac Solstice

Thank you for purchasing the finest Hardtop available on the market today. Skilled craftsmen using the highest quality materials and modern technology have manufactured this product. **For complete satisfaction of your purchase we highly recommend that you read the following simple instructions.** Ascertain that your installer is qualified and insist that he reads and follows the instructions. By following these instructions you will have many years of enjoyment and the top will last as long as your car.

For best results, we recommend that your Hardtop be installed and finished by a professional body shop.

A point to remember, automobiles are mass-produced and built with certain tolerances. Sometimes these tolerances are quite large. No two are alike. A body man is a skilled tradesman; a skill that is not learned overnight. A "well fitting" automobile is a series of adjustments and compromises.

DO NOT PAINT until after initial installation and not until you are completely satisfied with the fit. After this initial installation procedure to take on/off will be as easy as placing the convertible top up/down position.

Included in your shipping carton attached to cardboard are parts which are necessary in the final assembly of the Hardtop as shown below



Side Window Drip Guard Moldings (pr)



Trailing Edge Trim Molding



Side Window Rubber Seals



Leading Edge Trim Molding

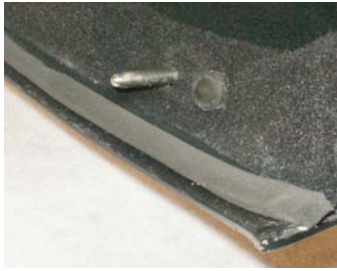


Rear Window Trim Molding

Attached to the hardtop



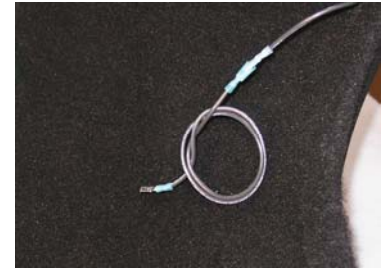
Rear attachment pin
OEM assembly (2)
Right shown



Front locator pin (2)
Right shown



Front attachment hook
& knob assembly



Defog extension wires (2)
Right shown
(Defog window upgrade)



Rear inner seal

A Prior to placing the Hardtop on the car:

1. Open both doors with the windows down
2. Fold the convertible top into the normal down position and close the deck panel.
3. Clean the top of the windshield frame and rear deck area. Inspect the windshield rubber for excessive wear or damage.
4. Lubricate the bottom of the deck rubber of the Hardtop with a silicone lubricant or Vaseline (Caution: Keep lubricant from the primed surface to be painted).
5. Familiarize yourself with the working of the front and rear latching assembly. The front latch attaches to the windshield and operates the same as the convertible latch. Once the hook is caught on the windshield bar the black knob is tightened clockwise to secure the hardtop. Tighten black knob against acorn nut before inserting hook assembly into hardtop and hooking onto windshield bar. After hook is caught on the windshield bar tighten knob towards front of car. Reverse procedure to uninstall hardtop.
6. The two rear pins snap into the receptacles on the rear deck as the convertible does.

B. Front latch:

1. Make sure that the two front pin locators engage their respective sockets on the windshield frame.
2. Make sure that the top is properly positioned, front and rear as well as centered on the car (see Hardtop Adjustment , page 5)
3. Insert front hook assembly into hardtop. Orientate open end of hook towards driver's side and hook onto windshield bar. Tighten black knob clockwise until front of hardtop is secured.

C. Rear latches:

1. Ascertain rear deck is closed.
2. Sharply push down on each side of hardtop to engage rear latch pins.
3. Close each window and gently close each door to check for any interference between hardtop, door or window.



Depending on the build tolerances of your car some or all of the following steps may be necessary to accomplish a satisfactory fit of your Hardtop. Check the various gap tolerances on all of the other panels on the car to ascertain what is acceptable. **Your hardtop has been prefitted and installed by factory technicians on a Solstice like yours.** We have found that build tolerances on the Solstice bodies are very close to each other. Therefore the following adjustments are normally not necessary

Hardtop Adjustment

Before any adjustments are made, read complete instructions.

Consider the leading edge molding dimensions when installed

Normal gap between hardtop and silver windshield frame is 1/2" before leading edge molding installation.

1. The front of the hardtop can be adjusted upward, downward or side to side. While the Hardtop is on the car, loosen both locator pins. (**Do not remove**). Push the Hardtop into the desired position. Once satisfied with the fit retighten both locator pins.
2. The rear gap between the Hardtop and the rear deck can be decreased or increased by adjusting the hardtop latch pins up or down. A gap no less than 1/4" must be maintained.

E. Rear Window Defogger:

1. Before lowering the convertible top find the GM defogger electrical wires located on each side attached to convertible top window and unplug.
2. Plug each hardtop wire extension into the unplugged GM wire and bring forward towards the pivot point of the convertible on each side of the car through the trap doors.
3. After installing the Hardtop on the car, plug the wire extension into the hardtop loom on each side.



F. Prep and Painting

IF THE TOP IS TO BE PAINTED AND THE HARDTOP IS EQUIPPED WITH A PLEXIGLAS REAR WINDOW: Mask off rear window with cellophane or a non-porous material to prevent thinner fumes from attacking the Plexiglas window. Use normal body shop procedures for prepping and sanding surface to be painted. The factory prime coat is Urethane, no sealer is necessary, and is compatible with all topcoats **Caution: The factory primed surface must be top coated before being exposed to the weather.** Failure to topcoat over the prime coat can cause blisters or delamination and will void the warranty.

G. Final Installation and Assembly

We highly recommend finishing paint and polishing before installing the following items.

Tips for Successful Installation of Hard plastic "L" shaped trim moldings and Rubber window seals

Trim Moldings "L" Shaped - Clean the surface of the Hardtop with alcohol. Remove a short section of tape protective film. Press firmly for adhesion. Careful use of a heat gun at corners will facilitate installation. Check openings. Adjust the molding to suit. The adhesive does not become a bond for 48 hours to allow for repositioning. When satisfied with the gap/fit use the heat gun while pressing down on the molding to permanently activate adhesion.

Rubber Seals – Clean the surface with alcohol. Compress rubber from end to end. Do not stretch.

Molding and Rubber Installation

Remove hardtop from the vehicle and place upside down on a secure well padded surface.

Trailing Edge Molding

The trailing edge molding is to be applied to the trailing edge of the hardtop from the bottom corner of the side window opening around the perimeter of the hardtop to the opposite corner. The adhesive leg of molding will be applied to the bottom edge of the hardtop. The short leg of the molding will be visible on the outside of the hardtop when finished. Remove a 12 " portion of protective film from "L" shaped molding. Starting at the rear corner driver's side window opening, press firmly into position ascertaining the short leg is tight against the outer edge of hardtop. Proceed in 12" increments using heat to force plastic molding to form and adhere to hardtop.



Note: Heat molding a short section at a time before applying to hardtop. Continue to passenger side corner. Trim length to suit.

Reinstall hardtop on vehicle ascertaining the hardtop is adjusted front to rear and side to side. **Normal gap between hardtop and silver windshield frame is 1/2" before leading edge molding is installed.**

Leading Edge Molding

Note: The long leg of the leading edge molding should be on the top edge of the hardtop pointing rearward.

Install the leading edge molding by removing the protective tape film. As you proceed start at the front corner aligning the edge molding and hardtop moving across the front while maintaining an even gap. Press firmly for permanent adhesion. Careful use of a heat gun or hair dryer will facilitate installation.

Side Window Molding



Note: The short leg of the drip edge guard should be on the outside edge of the hardtop pointing upward.

Install the side window drip guard molding by removing the tape protective film. As you proceed start at the front corner aligning the edge guard and hardtop while moving rearward. Press firmly for permanent adhesion. Careful use of a heat gun or hair dryer will facilitate installation

Rear Window Molding

Install the rear window trim by removing the tape protective film. As you proceed start in the center at bottom aligning the trim and hardtop while pressing firmly for permanent adhesion. Careful use of a heat gun or hair dryer will facilitate installation, particularly in the corners.



Side Window Seals

1. Clean the painted fiberglass surface area with alcohol.
2. With the side windows open begin at front corner. Remove red film from adhesive approximately 3" from leading edge of window seal.
3. Insert nose into and tight against the windshield weather seal pocket for a perfect fit. Press seal against hardtop for adhesion.
4. Open door and raise window. Gently close door for any interference between hardtop, door or window. A crisp dollar bill can be used to check for proper window seal. Open door with the window in the up position. Place the bill between the window and the seal and close the door. The bill should drag but not rip while pulling out.
5. Proceed rearward with installation of window seal. Do not stretch rubber. Check with dollar bill as you proceed. Trim bottom approximately 1/4" long. Compress seal to install bottom corner. The adhesive does not become a permanent bond for 48 hours to allow for repositioning.
6. Repeat process on the other side.



Now step back admire and enjoy the new aggressive attitude of your Solstice.

Note! Initially when raising the window it may follow the wrong track in the rubber until the rubber seal takes a permanent set from the window. Make sure that the rubber is properly lubricated with silicone based wax or Vaseline. To avoid this, push outward on the window while it is raising. Initially when the car is not in use, leave the windows in the up position then close the doors to facilitate the set.

F. Maintenance of the Hardtop:

1. Periodically check the tightness of all the latches.
2. Side window rubber molding may be lubricated with a silicone base wax or Vaseline for easy winding of the windows. Similar lubrication may be used on the deck rubber seal if squeaking occurs.
3. If painted, keep surface waxed to preserve the gloss finish. On vinyl tops, clean periodically with a vinyl cleaner and coat with a vinyl top sealer.

4. If the rear window is Plexiglas caution should be exercised to prevent scratching. Don't wipe when dry. Clean with water and mild soap using a sponge or soft cloth. Dry with a chamois. Keep dirty rags away from the window. A Plastic wax such as "Mirror Glaze" can be used to wax the window.

Warranty: All Smooth Line Hardtops are warranted to be free from defects in material or workmanship and are warranted for one (1) year from date of purchase. Smooth Line will, at its discretion, repair or replace at its factory, without cost, any part that fails in service, upon our inspection, within the warranty period. The warranty does not cover freight, labor, failure of related components or failure resulting from alteration, misuse, accident damage, faulty installation, color coating, or faulty repair. For warranty service for a Hardtop purchased from a distributor you must make all arrangements through that distributor. If purchased directly from Smooth Line contact Smooth Line sales department. Warranty for all components must be supported by the proper registration documentation including the original shipping invoice. At no time are Smooth Line Hardtops returnables for credit or refund for any reason.

Returned Goods: Written authorization must be obtained from Smooth Line and the distributor before merchandise may be returned for warranty service. All merchandise must be properly packaged in non damaged condition. An itemized packing slip, showing invoice number and date, with full explanation of reason for return must be included. All returns must be sent freight prepaid. All costs relative to a return are not reimbursable.

Freight Damage: Smooth Line products are carefully packaged by professionals. Delivery in good condition is the responsibility of the carrier. All shipments are insured. Upon receiving your merchandise, while in the presents of the delivery driver, before signing, carefully inspect carton for damage or rough handling. If apparent, open package and inspect merchandise. If damaged, refuse shipment, have driver note damaged on bill of lading. Call Smooth Line after driver leaves with the shipment.

The above terms and conditions pertain to all orders and will be strictly applied. Please do not ask for exceptions.

WARNING

This product is designed to enhance the appearance of the vehicle and to shield the occupants from ordinary weather conditions. Do not rely in any way on the components of this product to contain occupants within the vehicle, or to protect against injury or death in the event of an accident. This product will not protect the occupants from falling objects.

WEAR SEAT BELTS AT ALL TIMES.